



CNC Bridge Cutter

SNM-FN2000

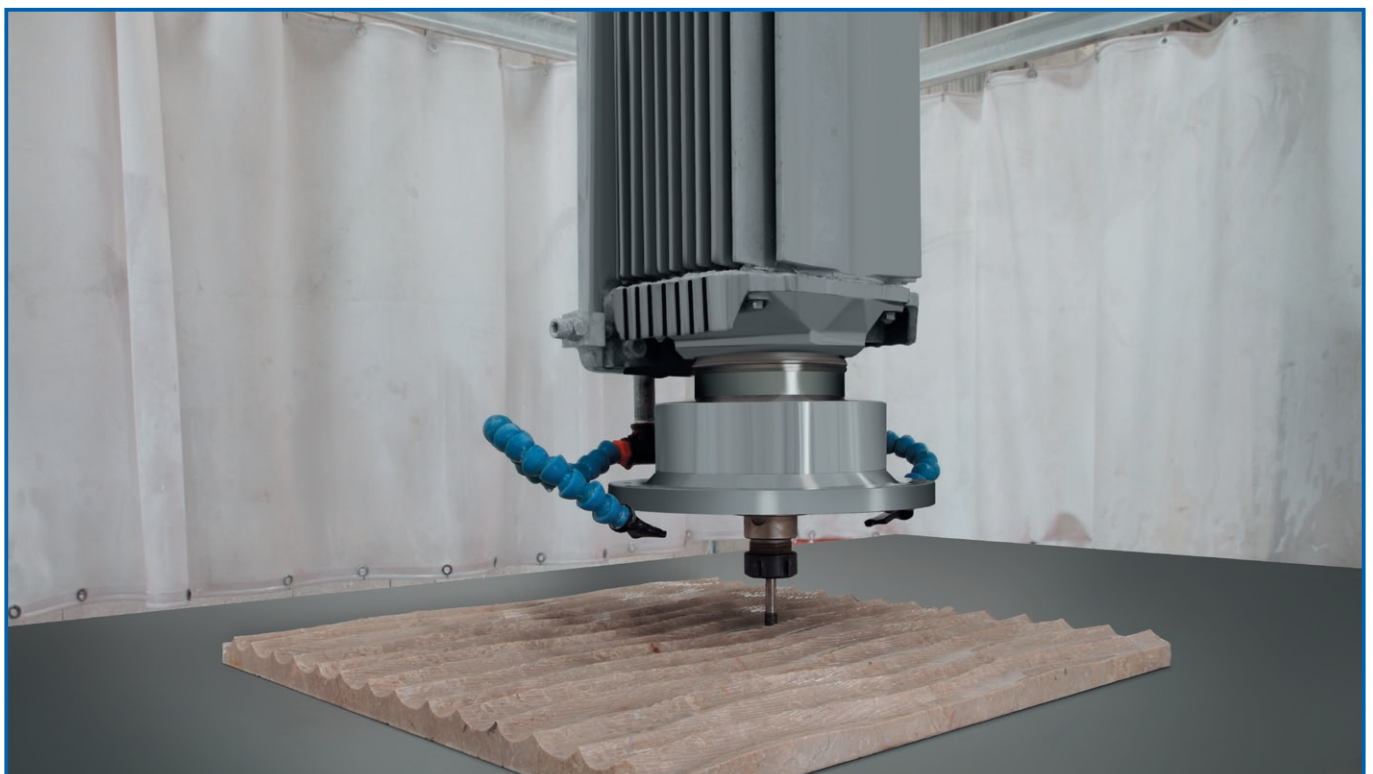
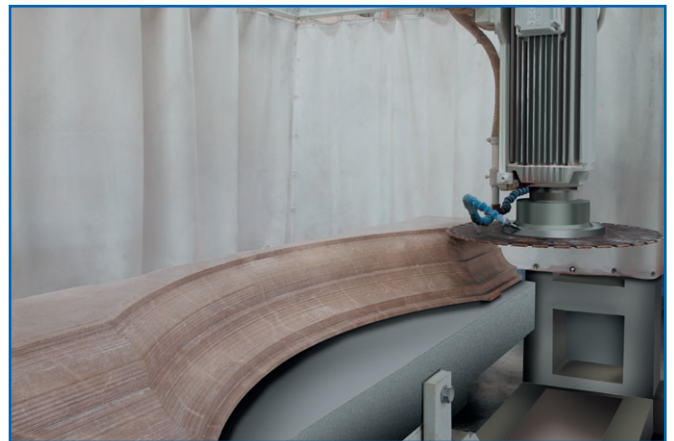
Machine characteristics

The SNM–FN2000 CNC bridge cutter is a high quality, technically advanced 3 axis CNC machine at a reasonable price.

General characteristics

SNM–FN2000 is fast, and easy to program for marble, granite and stone. It is capable of carrying various types of jobs using either disks or tools. It shapes, carves, engraves, cuts and drills. It is the ideal machine for making large door arches, profiling edges and carving fireplaces.

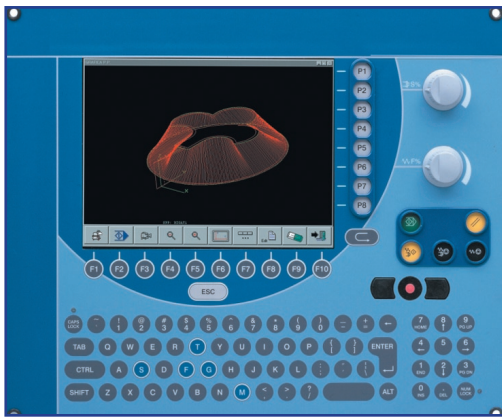
- The 3 interpolated axis motion is done by brushless motors coupled with extremely precise reduced-backlash reduction gears.
- The table and bridge sliding devices are working in an oil bath to reduce friction and are protected by stainless steel covers.
- The table moves with a high precision rectified ball screw.
- The manual switching from a cutting disk to a bit tool is quick and easy:
 - Unscrew the disk, remove the cone cover, install the cone and start.
- Manual inclination 0° or 90 °.
- Manual turning table 0 °, 90 °, 180 ° and 360 °.



The CNC

The SNM-FN2000 CNC bridge cutter is equipped with the latest CNC with the following features:

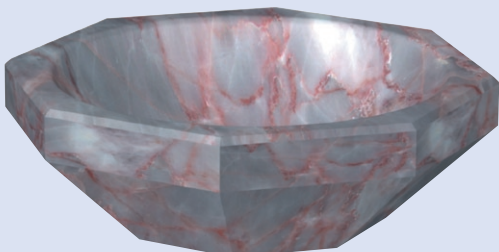
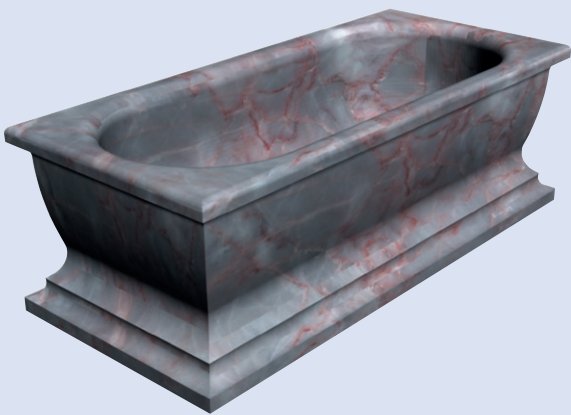
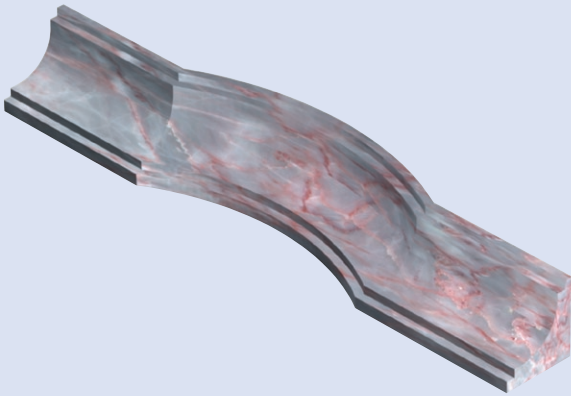
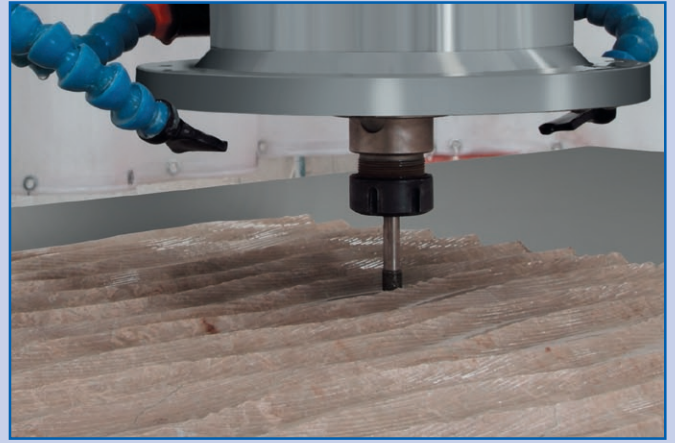
- 3 interpolated axis control + 1 controlled spindle
- 1 Hand-wheel directly connectable to the operator panel
- 2 overrides (feed and spindle rotation)
- Man / Machine interface, which has been developed in a Microsoft Windows environment, is extremely user-friendly and intuitive. The different functions available can be selected by using soft keys that are associated with toolbar icons depending on the operational context.



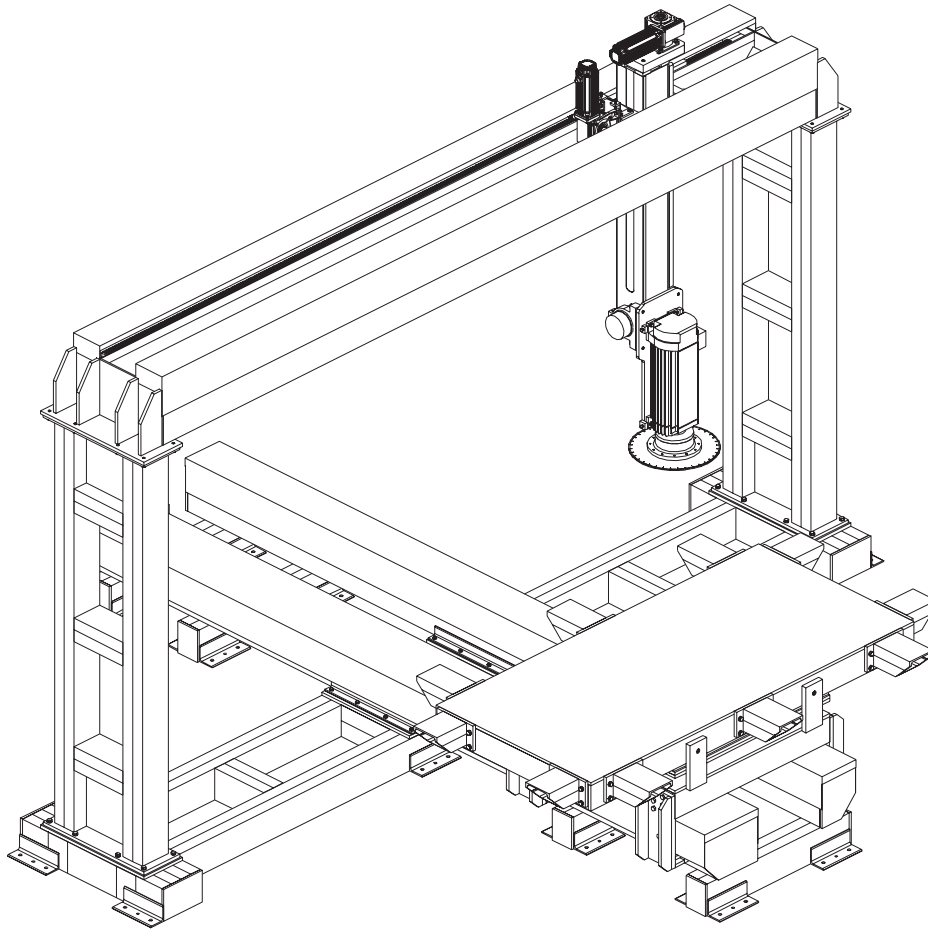
The Software

- Alphacam is one of the leading and most established suppliers of CAD/CAM software for the stone industry. The Alphastone modules have been specifically developed to address the unique challenges encountered when machining marble and stone.
- AlphaStone gives the user the ability to define any type of cutting tool, from disk cutters with programmable guards to ball end and user defined form tools. Alphacam automatically calculates the programming point of each tool from the material contact point.
- 2.5D and 3D profiles can be quickly and efficiently roughed using disk cutters, taking into account any stock material. This is particularly useful when roughing wash basin and bath tub shaped features.
- Disk cutters can be used in any orientation to finish sculptured 3 dimensional surfaces.
- The marble module has the ability to import bitmap format art work and convert these images into 3 dimensional machining moves.
- STL files can also be imported and machined, making links to 3 dimensional laser scanners easy.
- There is full core drill support for both 2 and 3 dimensional material removal and depths of cut are automatically detected as well as tool path depth limitations.









Technical characteristics

X axis stroke (table)	3800 mm
Y axis stroke (carriage unit)	3200 mm
Z axis stroke (carriage unit)	900 mm / 700 mm
Table dimensions	3 meters x 1.8 meters
Tool-holder spindle motor power	25 Hp
Rotation speed of the tool-holder motor	0 - 8000 rpm
Spindle motor cone size	ISO 40
Manual centralized lubrication for the ball screw	Grease
Electronic hand-wheel	Yes
Water requirement	35 liters / min
Compressed air pressure	6 bars
Max. total absorbed power	25 Kw
Overall Dimensions: Length x Width x Height	5.5 meters x 5.7 meters x 4.3 meters
Approximate total machine weight	7.5 tons
Maximum weight on table	10 tons
Vacuum pump	Optional
Laser device	Optional

SNIC reserves the right to improve the product specifications and designs at any time without prior notice. Therefore, data provided in catalogues is indicative and approximate.